

DRAWING NUMBER  
**52/129**

DRAWING NUMBER

DRAWING NUMBER

DRAWING NUMBER

# THE POLO CLUB OPEN SPACE PLAT ONE

SITUATE IN SECTION 35, TOWNSHIP 46 SOUTH, RANGE 42 EAST  
PALM BEACH COUNTY, FLORIDA.

BEING A REPLAT OF A PORTION OF "THE POLO CLUB PLAT I", A P.U.D., AS RECORDED  
IN PLAT BOOK 52, PAGES 35 - 36.

JULY, 1985

SHEET 6 OF 6

**129**

STATE OF FLORIDA  
COUNTY OF PALM BEACH  
THIS PLAT WAS FILED FOR  
RECORD  
THIS \_\_\_\_\_ DAY OF \_\_\_\_\_  
AD. 198 \_\_\_\_\_ AND DULY RECORDED  
IN PLAT BOOK \_\_\_\_\_ ON PAGES  
\_\_\_\_\_ AND \_\_\_\_\_  
BY: JOHN B. DUNKLE, CLERK  
D.C.

L.W.D.D. E-3 CANAL R/W  
(O.R.B. 4299, PG. 552)

WEST PERIMETER OF "THE POLO CLUB PLAT I" (P.B. 52, PGS. 35-36) — 501°37'08"E 2576.00' (TOTAL)  
N01°37'08"W 1044.40' 20' NON-EXCLUSIVE EASEMENT (O.R.B. 4299, PG. 552)

P.O.B.  
PARCEL I

PARCEL I  
RI (RECREATION TRACT)  
11.879 ACRES

CHAMPION BOULEVARD  
P.B. 52, PGS. 35-36

(WATER MANAGEMENT TRACT)  
LK I  
0.970 ACRES

A PORTION OF TRACT "I" (THE POLO CLUB PLAT I) (P.B. 52, PGS. 35-36)  
NOT A PART OF THIS PLAT

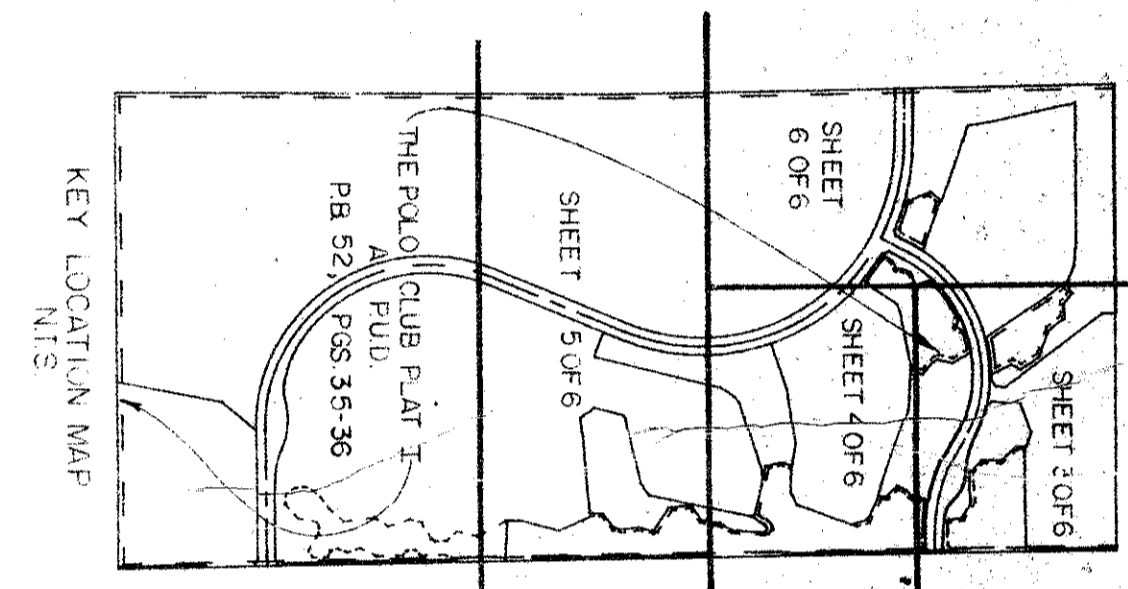
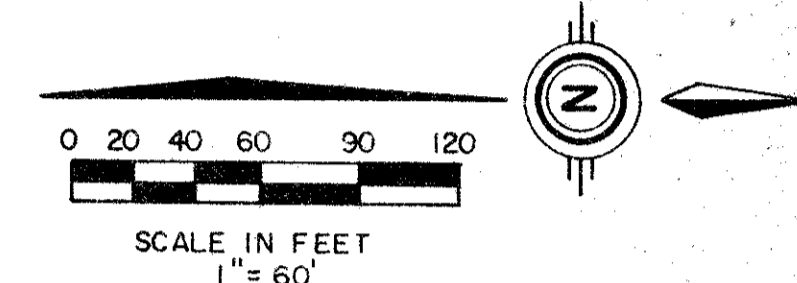
TO BE MAINTAINED BY  
"THE POLO CLUB OF BOCA RATON  
PROPERTY OWNERS ASSOCIATION, INC."

PARCEL I  
RII (RECREATION TRACT)  
11.879 ACRES

CHAMPION WAY  
P.B. 52, PGS. 35-36

RII (RECREATION TRACT)  
0.281 ACRES  
SHEET 6 OF 6

MATCH LINE "C" SHEET 6  
SHEET 3



L.W.D.D. E-3 CANAL R/W  
(O.R.B. 4299, PG. 552)

0436-303  
**52/129**

Meridian Surveying and Mapping Int.		2328 SO. CONGRESS AVE. WEST PALM BEACH, FL.
DRAWN MAM / MEH	DATE JULY, 1985	THE POLO CLUB OPEN SPACE PLAT ONE
CHECKED MAM	SCALE 1" = 60'	
DRAWING NO. 85-P-058		